



Corporate History

Mr. Shangen Ge, founder of Amass Freight International Co., Ltd., joined Beijing Sunshine International Forwarding (Shanghai) Co., Ltd. and established No. 3 Freight Department in 1996. In the beginning, the department's primary product was import shipping. After going through the many obstacles, the company has finally come to win trust of its clients and other companies of the same trade as well as support and approval of all walks of life.

In September of 2004, the original No. 3 Freight Department of Beijing Sunshine International Forwarding Co., Ltd. was spun off and became Shanghai Amass Freight International Co., Ltd. It has become a top notch freight forwarder with LCL transactions as its core business. Its services were diversified and it was a class 1 freight forwarder operating as a NVOCC. (With Ministry of Communications of the People's Republic of China Reg. No.: MOC-NV01893; U.S. Federal Maritime Commission: FMC-OTI No.021262NF) The company had 168 employees and had a registered capital of five million RMB.

Shanghai Amass Freight International Co., Ltd. officially began its business operation on January 1, 2005. Within three years, Amass developed into a leading company in LCL and import deconsolidation business in China. It has set up 7 subsidiaries and 3 branch offices in major Chinese ports and Changjiang Delta, including Hong Kong, Shenzhen, Xiamen, Ningbo, Jiaying, Nanjing, Yangzhou, Qingdao, Tianjin, Dalian, etc. Its total registered capital is forty one million RMB and it has more than 800 employees. With a long-term strategic goal of service globalization, the company has also set up wholly-owned subsidiaries in Canada and America to extend its excellent service across the ocean.



Amass International Group Inc.

INTRODUCTION

Business Introduction

According to statistics, the import and export business volume of Amass’s main service products – LCL and import deconsolidation transactions, is among the highest in Shanghai, Xiamen and Dalian ports because of its excellent service and complete coastal network. Its overall volume ranks first in China, with businesses radiating to more than 150 ports in 76 countries and regions and nearly 1,000 destinations in five continents all over the world.

With the management philosophy of “what others lack, we have; what others have, we have better”, its seaborne export business is growing rapidly. Amass has expanded and developed air freight, warehousing and bonded logistics businesses while maintaining the traditional FCL and LCL businesses.

Amass also owns trading companies and logistics companies. Amass Trading Company is devoted to negotiating foreign trades for clients, signing trade contracts, arranging shipments and exchanges purchase and write-off business; Amass Logistics Company provide clients with bonded warehouses, customs declaration services, professional supply chain and advisory services on 3-P Logistics solutions.

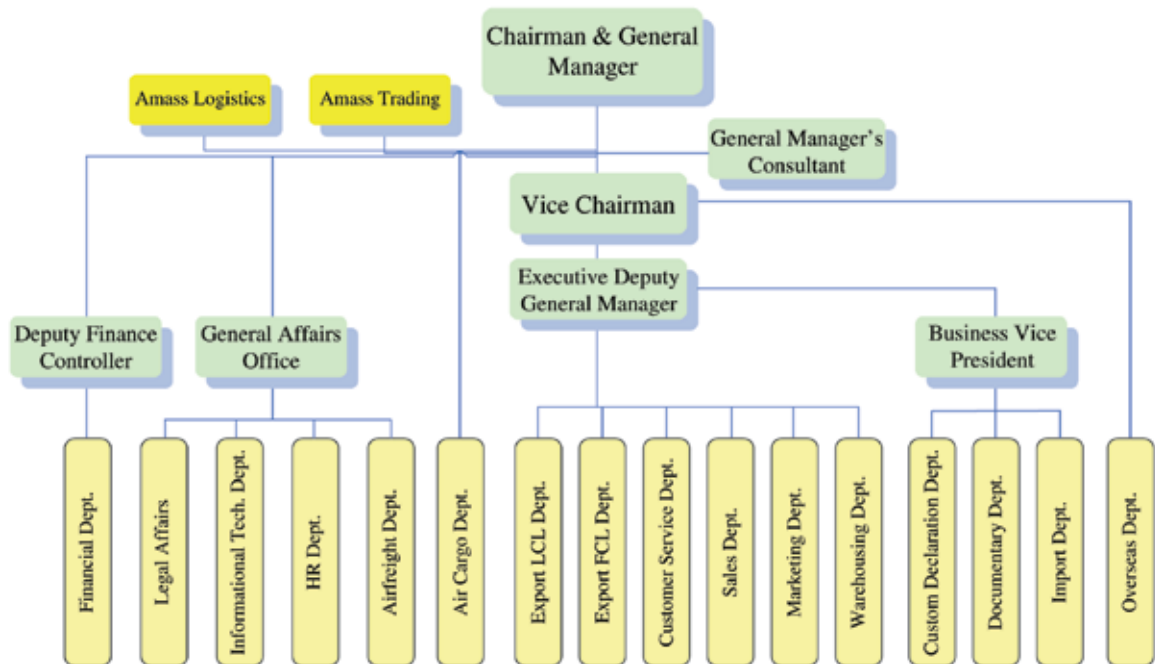
Business Scope	Services	Value-added Services
<ul style="list-style-type: none"> ■ Seaborne Import & Export Forwarding ■ Airfreight Import & Export Forwarding ■ Cargo Canvassing & Booking ■ Declaration ■ Warehousing service ■ Door-to-door service 	<p>Core Business</p> <ul style="list-style-type: none"> ◆ Seaborne export LCL ◆ Seaborne export FCL ◆ Seaborne import deconsolidation <p>Special services</p> <ul style="list-style-type: none"> ◆ Import FCL, LCL ◆ Airfreight import & export ◆ International Transshipment LCL ◆ Loading inside warehouse ◆ Bonded logistics 	<p>Warehousing: Selecting marks, pallet packing, inspection and quarantine;</p> <p>Commerce: Foreign trade, cargo insurance agency service; clients training;</p> <p>Consultation: Supply chain, 3P logistics solution design</p>



Organization

The company is composed of the following departments: LCL Export Department, FCL Export Department, Customer Service, Import Department, Airfreight Department, Customs Declaration Documentary Department, Customs Declaration Department, Warehousing Department, Sales Department, Marketing Department and Overseas Department, etc. (as shown in the chart), and the company has set up offices in several port areas including Wusong, Waigaoqiao and Yangshan.

With its administrative center in Shanghai, Amass has branch offices in major port cities and inland areas as well as offices in Hong Kong, Los Angeles, USA and Ontario, Canada. (Note: Please refer to insert# 3 and 4)





Amass International Group Inc.

INTRODUCTION

Corporate Culture

Amass' operating objective is founded base on "Honesty, to win by providing the best service, determination to be the best in the market".

Mission: "Serve the clients, serve the employees and serve society". Amass commits itself in nurturing qualified cargo business professionals; to gradually maximize employees' profits while the company is growing; to employ a professional, dedicated and highly-efficient team to provide quick and dependable one-stop service to the clients; to achieve "Extend help when needed, respond when asked, complete daily tasks on the same day, and be hospitable and considerate", so as to facilitate triple win situation for the clients, employees and the company during the joint development. The company has spared no effort in promoting the international shipping and logistics business in China and in propelling the economic development of the world, and has done its share of duties to improve people's lives.

Client-Oriented Policy – Our goal is to continually improve so as to meet our client's need. We strive to satisfy our customers.

Amass will help you achieve your goal!

Recognitions

Shanghai Amass joined Shanghai Customs Brokers Association and Shanghai Entry-Exit Inspection & Quarantine Association successively. Through attending the associations' events and seminars, Amass is up to date on the law and regulations of the supervisory department such as the Customs and Commodities Inspection Department, and this has guaranteed improvement in the regularity and professionalism of its business operation. In the past two years, Amass was awarded the followings:

- Shanghai Entry-Exit Inspection & Quarantine Association – Director
- Member of Shanghai Customs Brokers Association
- Excellent Customs Broker of 2007 (Shanghai Customs Brokers Association)
- Excellent Credit Company of 2006 (Shanghai Shipping Exchange)
- Chinese Logistics Brand Construction of Credible Model of 2007 (Chinese Logistics Productivity Center, China Container Industry Association, etc.)
- Committee member of Shanghai Inspection & Quarantine Association
- Member of Shanghai Customs Brokers Association
- Y2007 Excellent Customs Broker (by Shanghai Customs Brokers Association)
- Y2006 Excellent Qualification & Credibility's Services (by Shanghai Shipping Exchange Council)
- Y2007 Creditable model logistic company of China (by China logistics Productivity Promotion Center, China Container Industry Association)



LCL Export Sea Freight

Amass' core advantage is its excellent service in LCL consolidations. Amass' professional LCL team has more than ten years of experience and it accepts various types of LCL consolidations including general cargo, over-length and over-weight cargo, hazardous substance and hanger container. The company strictly follows SOP operation. It employs full-time customs staff to review the customs documentation, to instantaneously monitor loading activity, to issue bill of lading within twenty four hours after loading, to provide 24-hour destination inquiry service and to trace the cargo and send feedback information while the cargo in transit and until it is picked up by the consignee.

Amass looks after every cargo consigned by the client with meticulous care, and overcomes all difficulties to complete the mission. Consider your cargo delivered on time when you hand us your manifest.

- Professional and honest team – Must undergone 144 hours of training, including training on warehousing, customs declaration and other related business transactions
- Over 150 LCL locations in major ports all over the world
- Overseas network consists of more than 120 mature agents all over the world
- Accepts various types of businesses including DDP, DDU and EXW
- Transparent quotation system, standardized destination charge
- Convenient EDI, AMS systems
- Strong E-Commerce capability
- Solid DI basis
- All coastal ports may accept LCL cargos nationwide



CORE BUSINESS

FCL Export Sea Freight

FCL Export is Amass's newly established business based on its existing domestic and international network. It offers both the domestic and international clients one-stop shipping service from the exporting factory to the consignee's warehouse. Amass has signed booking agreements with many first-class shipping companies and guarantees a good shipping price and "never" to miss a voyage or discharge container. Amass strives to provide reassuring services to its clients.

- Booking: APL, CMA, COSCO, CSCL, HYUNDAI, YM
- Customs declaration and inspection
- Door to door service
- DDP, DDU, EXW

Accepts special containers including reefer, flat rack container, hazardous container, roll on/off cargo container, etc.

Import Deconsolidation

Amass has established a sound reputation in its long-term cooperation with overseas agents which has brought in countless cargo businesses from abroad. Its import deconsolidation business is also growing rapidly. With its solid overseas network, mature domestic network, experience in import business perennially, Amass looks forward to businesses from both domestic and international clients.

- Import deconsolidation and door delivery/pickup service
- 10-day free storage
- Import document exchange, customs clearance, and three inspections
- Online cargo tracking
- DDP, DDU, EXW
- Accepts global transportation service for imports, including hazardous LCL import business



FCL and bulk cargo Import Sea Freight

FCL and bulk cargo import is the traditional special service offered by Amass since it first started the business, including import transportation of bulk cargo, such as coal and ore. Amass wants to provide clients with more than what a general important shipping agent provides. When clients encounter problems, Amass will provide immediate assistance to resolve the problem based on its many years of experience.

- Accepts various types of import business including container, bulk cargo and over-sized cargos
- Booking service and load control from ports around the world to Shanghai (Regular container and bulk cargo shipping service)
- Inspection and Quarantine service
- Customs clearance commitment (subject to provision of complete documents and customs manifest information):
 - a. LCL and duty free cargoes shall be released within two days, and shall be released within three days in case of inspection.
 - b. General trading cargos are released within three days, and are released within one week in case of inspection.
- Door to door, trans-customs transportation

Imp. & Exp. Air Freight

Amass' air freight service provides high-quality transportation service to its clients, wherein international air freight and domestic freight are the principal parts of the service. Amass tailors its service to client's needs. It chooses the fastest and most economical flight and adopts various types of transportation plan (door to door, door to airport, airport to airport, airport to door).

- Documents exchange at sight on the same day
- Fast and smooth customs clearance and commodity inspection
- Flight tracking report
- Transportation service supervision
- Provides packing, sorting and drayage service for special cargos per client's requirements
- Provides pallets, slip sheet and shrink film per client's requirements
- Provides cargo deconsolidation and personalized LCL service per client's requirements



CORE BUSINESS

Warehousing

Amass' warehouse is located at Gaoqiao, Shanghai Pudong District, near the looped intersection and national highway. Its convenient location has given it advantage in transportation. Amass' management team has more than twenty years of warehousing experience, and leads more than one hundred warehouse staffs to provide 24-hour service all year long.

- 28,000 square meters in warehouse area
- Twenty-two 3-ton forklifts and one 7-ton forklift
- One 40-ton front handling crane
- Cargo packing, sorting, and putting on shipping marks
- Provides pallet, slip sheets and shrink film
- Cargo delivery inquiry and packing report

Bonded logistic

By mastering the policies of the bonded zone and the various operation methods, Amass adds flexibility, reduces cost, enhances circulation and increases asset utilization rate to the client's supply chain.

- Storage, distribution, packing
- Customs clearance for international import and export trades, and timely tax refund for export cargoes
- Offers refined processing carry-over service to replace Hong Kong one day tour
- Offers bonded warehousing service for cargoes of entrepot trade
- Offers customs transfer service between different customs jurisdictions

Value-added Services

- Inventory information management
- Supply chain and 3-P design consultation



Amass International Group Inc.

DOMESTIC CHANNELS

In order to establish Amass as a international brand and to adapt to the changing market demands, Shanghai Amass Freight International Co., Ltd. has set up branches in major Chinese ports and Changjiang Delta, including Hong Kong, Shenzhen, Xiamen, Jiaxing, Nanjing, Ningbo, Dalian, Qingdao, etc.





Amass International Group Inc.

DOMESTIC CHANNELS

<p>Amass Freight Int'l (Dalian) Co., Ltd. No. 1405, Building A, Mingshi Fortune Center, Gangwan Street, Zhongshan District, Dalian City Tel: +86 411 39868999 Fax: +86 411 39869555 / 39869566</p>	<p>Amass Freight Int'l (Shenzhen) Co., Ltd. Room 2101-2103, Guidu Building, Chunfeng Rd., Luohu District, Shenzhen City Tel: +86 755 82141618 Fax: +86 755 82141628</p>
<p>Tianjin Amass Freight Int'l Co., Ltd. No. 2206 Xinda Square, No. 118, Jiefang Rd., Heping District, Tianjin City Tel: +86 22-5829 9718 Fax: +86 22-5829 9711/9722</p>	<p>Amass Freight Int'l (Hong Kong) Co., Ltd. 12-Floor, Donghua Building, No. 199-203, Hennessy Rd., Wanchai, Hong Kong Tel: +852 31511700 Fax: +852 25736020(All) 25736020 (Imp.) 28340631(Exp.)</p>
<p>Qingdao Amass Freight Int'l Co., Ltd. No. 6, Zhengyangguan Rd., Qingdao City Tel: +86 532 82662662 Fax: +86 532 82662672 /2682</p>	<p>Nanjing Office No. 1816, Building B, New Century Square, No. 1, S. Taiping Rd., Nanjing City Tel: 025-84651938/6 Fax: 025-84705677, 84671280</p>
<p>Ningbo Amass Freight Int'l Co., Ltd. No. 10-10, Dushirenhe Center, No. 58, Qizha St., Haishu District, Ningbo City Tel: +86 574 27952588 Fax: +86 574 27952555/66/77</p>	<p>Yangzhou Office No. 56, W. Wenchang Rd., Yangzhou City, Jiangsu Province Room 12B16, Xiyuan Int'l Building Tel: +86 514 85880441 Fax: +86 514 85880114</p>
<p>Xiamen Amass Freight Int'l Co., Ltd. Room 1706, Banking Center, Xiahe Rd., Xiamen City Tel: +86 592 2388000 Fax: +86 592 2388001/02/03</p>	<p>Jiaxing Office Room 628, Ruifu Int'l Business Building, No. 160, Changxiu St., Jiaxing City, Zhejiang Province Tel: +86 573 82193852/53/54/55 Fax: +86 573 82193852</p>
<p>Xiamen Branch Fuzhou Office Room 1006, 10-Floor, District A, Huanqiu Square, Wusi Rd., Fuzhou City Tel: +86 591 88019488 Fax: +86 591 8801949</p>	



Amass International Group Inc.

OVERSEAS CHANNELS

Carefully selected and constructed overseas channels extend Amass's reliable service to more than 76 countries and regions, 150 major ports, nearly 1,000 destinations throughout the five continents, including the United States, Canada, Europe, Southeast Asia, Asia, India/Pakistan, the Middle East, South Africa, Australia & New Zealand, and the Mediterranean area.

Through long-term cooperation and credibility test, most of the export destination agents also designate Amass as the import agent for cargos sold to China.

Targeting service globalization, Amass has set up wholly-owned subsidiaries in Canada and America to extend its excellent service to the other side of the Pacific. (See overseas channel distribution chart)



Amass Int'l Group Inc.
13191 Crossroads Parkway North, Suite 385
City of Industry, CA. 91746
Tel: 1-562-222-7755 Fax: 1-562-222-7700
Web site: www.amassgroup.com

Ginger Freight Int'l (Canada) Inc.
6685 Tomken Road, Suite 207
Mississauga, Ontario L5T 2C5
Tel: 905-795-8808 FAX: 905-795-8809
EMAIL: george.ca@amassfreight.com



Amass International Group Inc.

E-COMMERCE

Amass has always strived to improve its service, hoping to provide a fast and accurate interactive platform to help clients integrate their business information, enhance an intelligent and paperless office, and save time and energy, so as to impel the clients' business.

Schedules and Rates

After the client registered online, the client may obtain our latest LCL price and forecasting shipping date by clicking the "Schedules and Transit Time" icon.

Online-booking

Booking list — In addition to traditional communication methods such as telephone, fax and e-mail, contracted clients may also order booking on Amass's website by clicking the "Online booking" icon.

Binning requisition — Our customer service staff will confirm the booking order within five minutes, after which, the client may retrieve the <binning requisition> on line, and may also use the printed or electronic <binning requisition> to notify the carrier to make delivery arrangement.

Bill of lading confirmation — After the cargoes have been loaded, the client may confirm or modify the bill of lading online. The client may also use our standard EDI form's import function, so as to avoid repeating entry of information at online booking, bill of lading confirmation and modification.

Print Bill of Lading — The client may use the Print Bill of Lading function, so as to avoid the redundant electronic form editing process and enjoy a more convenient service.

Warehousing status inquiry

The [binning requisition] function on Amass' website gives the client a clear view of the actual binning status of the cargoes, allows the client to check if the status of stock matches the plan, and allows the client to contact the relevant coordinator when the plan has changed.

Cargo tracing and tracking

The client may use Client ID, Amass Binning No. or Bill of Lading No. to query real-time loading information of the cargo, including actual binning status, whether the loading volume is larger than the actual volume, the shipping date, port and agent information by clicking the [Cargo tracing and tracking] icon.

At the same time, our cargo tracking system syncs with the Customs' system, and provides clients with customs declaration status and details of the customs documents, as well as the status of the write-off instrument and returned manifest.

Business Inquiry

In order to help the client make a query, track, reconcile the account and manage all businesses they entrusted to Amass, [Entrusted Query] provides all the information about the businesses they entrusted to Amass. (This service is currently only available to VIP clients.)

In addition to basic shipping information, the client may also query balance due, invoices, customs clearance status and returning bill status.

Consulting Online

Your first time dealing with us and you don't know who to contact? Don't worry. Please visit [Consulting Online]. Our customer representative is available 24-hour a day to answer your questions.

Thank you for your interest in our E-Commerce platform. Your opinions are valuable to us. Please feel free to express your opinions in our online forum.